

BatchSize?

Reports?

Rece Name?

Inventory?

Automatic?

0.1W

9.92

Order Done

---

Complete Control Over  
Batching and Filling  
Operations Is  
At Your Fingertips.

---



# LYNXBATCH® Controller

METTLER TOLEDO

# Take Command of Your Production Quality and Costs

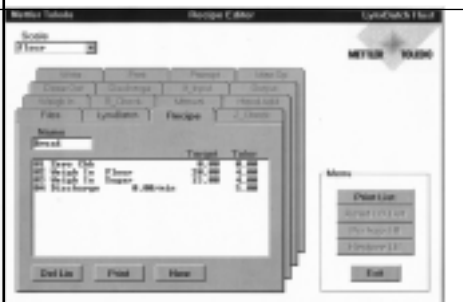
The LYNXBATCH controller excels in accurate, flexible, and reliable control of material delivery by weight. It offers standard capabilities generally unavailable or unaffordable in custom designed and programmed systems. It gives you the control you need to take command of your production quality and costs.

## Effortless Control

- Push button recipe selection by name
- Quick and easy recipe maintenance
- Enable only the features you need
- Simple installation

The LYNXBATCH controller makes control of batching and filling processes almost effortless. Just push one button to select a recipe by name, another to start. Installation is just as easy. Operator prompts are human-readable and customizable, making recipe edits, data input, and reporting easy and precise.

You can enable or disable features, like batch size adjustments or material target corrections, to make the LYNXBATCH controller as simple or as capable as needed. Its flexible design also allows you to enhance its capabilities as your application needs expand.



**The LYNXBATCH controller's DATAVAULT software edits and stores recipe and material files, and communicates with up to 8 LYNXBATCH controllers.**

Select and run a recipe using just two push buttons – standard on the self-contained, harsh environment LYNXBATCH controller.



## Flexible Control

- Adapts to most filling and batching applications
- Automatic, semi-automatic, and manual modes
- Interacts with other systems and equipment
- Provides flexibility in data input and output

Like the animal which influenced its name, the LYNXBATCH controller is agile. It is configurable and extensible, allowing it to adapt to most filling and batching applications.

Run it fully automated or in semi-automatic mode to single step through a prototype recipe for careful validation. Manual mode gives operators push button control of material feeders and outputs. Fully configurable discrete I/O, recipe action codes, and a robust serial host interface also allow the LYNXBATCH controller to easily interact with other systems.

## Durable Control

- Maximizes uptime with reliable performance
- Designed for tough, real-world industrial environments
- Minimizes maintenance, calibration, and diagnostics
- Meets global electrical safety and legal metrology standards

The LYNXBATCH controller is designed to withstand the tough use that production schedules demand and operators dish out. The NEMA4x/IP65 stainless steel enclosure is ideal for the wash down, corrosion protection, and sanitation requirements of food, chemical, and pharmaceutical production environments. The controller's health is constantly monitored, and utilities help with maintenance efforts. Plus, you can confidently use the LYNXBATCH controller anywhere you do business because it meets the legal metrology and safety standards of most world markets.

Six reports are standard; templates allow customization.

RECIPE DETAIL REPORT				
TIME	16:45:07	DATE	Apr-04-2000	
----- RECIPE I.D. 01 -----				
NAME: PROD 1MR33				
BATCHES MADE: 2				
TOTAL WEIGHT: 202.5				
LN	ACTION	NAME	SETPOINT	TOLR
01	Print	Print On		
02	S_Check		0.0	5.0
03	Wgh_In	SAND	125.0	3.0
04	Wgh_In	CLAY	65.0	2.6
05	Output	#3 ON for 30 sec		
06	Write	MIXING 308- for 30 sec		
07	Output	#3 OFF		
08	H_Add	STABILIZER	120.0	
09	Disch			5.0
10	Print	Summary		

BATCH SUMMARY REPORT				
TIME	16:46:42	DATE	Apr-04-2000	
RECIPE: 1 NAME: PROD 1MR33				
BATCH No: 3 SIZE: 310.0				
MATERIAL	TARGET	ACTUAL	TOLR	
SAND	125.0	125.1		
CLAY	65.0	65.0		
STABILIZER	120.0	119.9		
BATCH WEIGHT DEVIATION: +0.0%				
TOTAL BATCH WEIGHT: 310.0 lb				

## Powerful Control

- Memory for 1000 recipe lines and 50 materials
- Restores recipe execution after power failures
- TraxDSP filtering improves material cutoff accuracy
- Password protection secures data assets

With the LYNXBATCH controller, you can pre-program recipes that select from as many as 50 materials (up to 8 automatic feeders). If power fails while executing a recipe, the LYNXBATCH controller can resume where it left off. It also features METTLER TOLEDO's exclusive TraxDSP signal processing for 100% digital filtering of vibration and noise - even as you mix or agitate on the scale. For more control, use password protection to limit data access to authorized personnel.

**TraxDSP** →

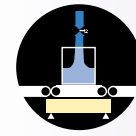


The panel mount LYNXBATCH controller mounts through a simple rectangular cutout.



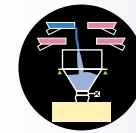
All external wiring connections are to removable, clamp-type terminals.

## Use the LYNXBATCH controller for diverse applications such as these:



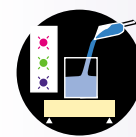
### Container Filling Automation

Whether filling bags, drums, cartons or totes, the LYNXBATCH controller delivers precise cutoff control that learns as it goes to ensure accurate net weights while reducing product giveaway. Check the empty weight of the container, automate material delivery, verify in tolerance weights, and print a label. All the operator does is press START.



### Multi-Material Batching Control

The LYNXBATCH controller uses your product name to store and recall up to 99 recipes. Recipes have infinite flexibility by using 14 action codes in the exact order needed to meet specifications. Discrete inputs and outputs allow the controller to interact with other equipment, according to how you write the recipe. Automatic recipe execution improves accuracy and productivity, reduces errors, and records results.



### Manual Materials Formulation Management

The LYNXBATCH controller can eliminate many of the variables that allow errors to creep into your quality program. It dependably leads operators through recipes, including up to 50 different materials, checks the tolerance of each, and records as-produced batch data. It can even validate the material bar code or instruct the operator to take additional process steps.

# Take Control with the Best Value in Batching and Filling Automation.

Recipe Action Codes	
Command	Description
<b>Zero Check</b>	Do a zero or an empty container check
<b>Weigh-In</b>	Automatically weigh in a net amount of material and check tolerance
<b>Weigh-Learn</b>	Learn material parameters each time during weigh in
<b>Discharge</b>	Discharge the scale
<b>Manual Weigh</b>	Manually weigh in a net amount of material and check tolerance
<b>Hand Add</b>	Prompt the operator for a hand-added, pre-proportioned material
<b>Manual Operation</b>	Allow operator manual control of a feeder or output
<b>Print</b>	Print a selected report or turn audit trail printing on and off
<b>Output</b>	Turn a specified output on or off or on for a number of seconds
<b>If-Input</b>	Test an input's state and hold or branch accordingly
<b>Dose-Out</b>	Weigh out one or more doses of material and check tolerance
<b>Prompt</b>	Prompt the operator for keypad or scanned data input
<b>Write</b>	Write a programmed message or scale data to the display
<b>Batch Check</b>	Check tolerance on or top-off total batch weight

Features	Benefits
<b>Learn Mode</b>	Avoids time-consuming guesswork by automatically setting material dribble and preact parameters
<b>Automatic Preact Adjustments</b>	Improves batching accuracy by making automatic adjustments to the material cutoff point according to experience
<b>Automatic Material Jogging</b>	Eliminates under-tolerance materials by adding small amounts of additional material until it is within tolerance requirements
<b>Batch Size Adjustments</b>	Allows standard recipes to be scaled up or down at run time to match current production requirements
<b>Target Corrections</b>	Permits operator to react to changing formulations by adjusting individual material target weights
<b>Audit Trail Printing</b>	Prints a record of results as the batch progresses
<b>Slow/Fast/Slow Feeder Speed Control</b>	Reduces splash, dust, or damage to fragile materials on initial delivery into an empty scale tank, hopper, or container
<b>Quick Recipe Selection</b>	Simplifies operator keystrokes for long production runs of a single recipe
<b>Number of Batches Programming</b>	Keeps count of the number of batches until a preset number is reached to control production
<b>Customized Operator Prompts</b>	Prompts the operator for keypad entered or scanned production data to enrich batch reports

Combine and order action codes for complete recipe control.



## METTLER TOLEDO

**USA**  
1900 Polaris Parkway  
Columbus, Ohio 43240  
TEL. (800) 786-0038  
(614) 438-4511  
FAX (614) 438-4783

**Headquarters**  
8606 Greifensee  
Switzerland

TEL. (41-1) 944 22 11  
FAX (41-1) 944 30 60

	TEL	FAX
Australia	(61-3) 9646 4551	(61-3) 9645 3935
Austria	(43-1) 604 1980	(43-1) 604 2880
Belgium	(32-2) 334 0211	(32-2) 378 1665
Brazil	(55-11) 421 5737	(55-11) 7295-1692
Canada	(905) 681-7011	(905) 681-1511
China (Industrial)	(86-519) 6642040	(86-519) 6641991
China (Systems)	(86-21) 6485-0435	(86-21) 6485-3351
Croatia	(385-1) 660 3009	(385-1) 660 2189*
Czech Republic	(420-2) 254962	(420-2) 24247583
Denmark	(45-43) 27 08 00	(45-43) 27 08 28
France	(33-1) 30 97 17 17	(33-1) 30 97 16 16
Germany	(49-641) 50 70	(49-641) 52951
Hungary	(36) 1257 7030	(36) 1256 2175
Italy	(39-2) 333321	(39-2) 356-2973
Japan	(81-6) 949-5901	(81-6) 949-5944
Korea	(82-2) 518-2004	(82-2) 518-0813

	TEL	FAX
Malaysia	(60-3) 703-2773	(60-3) 703 8773
Mexico	(52-5) 547 5700	(52-5) 541 2228
Netherlands	(31-344) 638363	(31-344) 638390
Norway	(47-22) 30 44 90	(47-22) 32 70 02
Poland	(48-22) 651 9232	(48-22) 42 20 01
Russia	(7-095) 921 9211	(7-095) 921 6353
Singapore	(65) 778 6779	(65) 778 6639
Slovak Republic	(421-7) 525 2170	(421-7) 525 2173
Slovenia	(38-6) 6123-57 64	(38-6) 6127-4575*
Spain	(34-3) 223 2222	(34-3) 223 0271
Sweden	(46-8) 702 50 00	(46-8) 642 45 62
Switzerland	(41-1) 944 45 45	(41-1) 944 45 10
Taiwan	(886-2) 579-5955	(886-2) 579-5977
Thailand	(66-2) 719 6480	(66-2) 719 6479
United Kingdom	(44-116) 235 7070	(44-116) 236 6399

**Internet**  
www.mt.com

Specifications subject to change without notice.  
©1999 Mettler-Toledo, Inc.  
METTLER TOLEDO™ and LYNXBATCH™ are trademarks of Mettler-Toledo, Inc.

Printed on recycled paper and is recyclable.

Printed in the U.S.A.

10M0499  
Batching/Filling  
BA1012.1E

\*Call for fax.